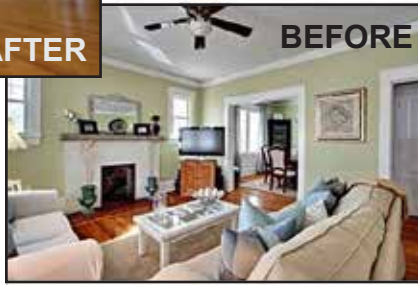


16

# Fitzgerald Residence

514 E. Whitaker Mill Road | Raleigh, NC



We took a 1935 bungalow at 1200 square feet and removed the roof. We added an additional 1200 square feet to the second floor to include three bedrooms, a full bath, and rec room. On the first floor, we reconfigured most walls to make a bigger kitchen, a master bath, powder bath, and office area or bedroom (5). We also added a screen porch and parking pad in rear. We removed the original front porch and added new. It was a complete house renovation, plus the addition of the second floor.

**DIRECTIONS:** Take Wade Avenue towards Raleigh; Get off on Glenwood Avenue and take left to Five Points intersection; Left onto Whitaker Mill Road; Home is on the left across from Mayview.

*Visit this home!*  
**REMODELERS  
 HOME TOUR**

April 27th: 10am-5pm

April 28th: 1pm-5pm

[www.wakeremodelers.com](http://www.wakeremodelers.com)

## SPECIAL FEATURES

- Tile work
- Fireplace
- Kitchen Layout
- Craftsman style
- Color schemes
- Cozy bungalow

## VENDORS

- 1st Choice Cabinets
- Hamilton Design Works
- Garner TV & Appliance
- Stock Building Supply
- Prep Rite Painting
- Carolina Current
- C.M. Byrd Tile

**aaronfitz**  
 CONSTRUCTION, LLC

(919) 909-2049

[www.AaronFitzConstruction.com](http://www.AaronFitzConstruction.com)  
[aaron@aaronfitzconstruction.com](mailto:aaron@aaronfitzconstruction.com)